

Viterbo University
Fine Arts Center - Main Theatre
La Crosse, WI
Technical Specifications



General Information

Contact Information

Mailing Address

Fine Arts Center
900 Viterbo Drive
La Crosse, WI 54601

Street Address

929 Jackson Street
La Crosse, WI 54601

Website

www.viterbo.edu/fac

Staff

Dillon McArdle
Director, Fine Arts Center
(608) 796-3730
dtmcardle@viterbo.edu

Martha Boehm
Marketing and External Relations
Coordinator
608-796-3733
maboehm@viterbo.edu

Caitlin McCoy
Patron Services Manager
608-796-3738
cemccoy@viterbo.edu

Andy Nauman
Rentals and Event Operations Manager
(House Management & Merch Sales)
608-796-3749
anauman@viterbo.edu

Maggie Hall
Sound Engineer / Event Technician
608-796-3740
mahall@viterbo.edu

Zane Rader
Campus Events and Production Coordinator
608-796-3741
ztrader@viterbo.edu

General Information (cont.)

Accessibility

Seating

Main Floor: (3) seats, (2) House Left, (1) House Right

Balcony: (5) seats, House Left, Lower Balcony*

*An elevator is available in the lobby for patrons who are unable to take the stairs.

Parking

A permit is required for parking in University parking lots until 5pm each weekday that school is in session. Temporary permits can be obtained in the Fine Arts Center Administration Rm. 102.

Tour vans, buses and tractor-trailer rigs may park in the loading dock, ramp or alongside the curb immediately adjacent to the loading dock. Engine idling is prohibited due to proximity to air handling intake vents. Shore power is available for up to (2) crew buses.

Loading areas

Loading access to the stage is through a garage door that is approximately 10'-0" by 10'-0". The stage is on a direct path through the garage door.

The loading dock ramp with a dock leveler device can accommodate 53' semi-trailer rigs. Drivers should pull alongside the building while oriented to the west before backing into the loading ramp.

The loading dock area in front of the garage door can accommodate (2) 15 passenger vans side by side.

Vehicles in the loading area and/or ramp do not require permits for the duration of time that the production is in their residence at Viterbo University.

Crossover

Backstage crossover is through the scene shop, which shares the rear wall of the stage.

Stage Access

Access from the dressing rooms is accomplished via a staircase on either side of the stage. To enter Stage Left performers must pass through the trap room.

Stage apron wraps around Proscenium and meets the side aisles with a single step down for access from stage to house.

When the pit is at orchestra level, musicians access the pit via two doorways in the trap room.

Management

Production Offices

Star Dressing Room

The primary production office is the Star Dressing room, which is located offstage right. Included in the room are a desk, chair, love seat, phone & internet lines, and full bathroom. This room can also serve as a dressing area for smaller companies or a single lead performer.

West Box Office

No longer used for its original function, this room located in the Lobby of the Fine Arts Center can accommodate (2-3) people. Hard and wireless internet connections are available.

Hospitality Suite

A flexible space capable of accommodating a wide range of meetings, receptions, or dinners for up to (40) persons. Built-in technology includes projector, screen hook ups for audio playback.

Telecommunications

Most areas have telephone hook-ups and all have network ports for access to the internet. Wireless internet login/password will be available from the Fine Arts Center on the day of the production.

Green Room

No dedicated green room is available. For productions with small casts or a single lead the Star Dressing room is available. Included in the room is a desk with chair, lighted mirror, loveseat and attached bathroom with full sized shower. Dependent on availability, the Hospitality Suite may be used for meals.

Rehearsal Space

Productions requiring additional rehearsal space may be able to use one of the dance studios. Scheduling priority remains with Academic departments, University productions, and individual student needs.

1st Floor Studio

Dimensions: 30'x50' approx.
Floor: Sprung Wood Laminate
Piano: Yamaha P22
A/V: CD and Tape Cassette Playback
Mini Jack
Up to (3) XLR jacks

3rd Floor Studio

Dimensions 20'x95' approx.
Floor: Sprung Wood Laminate
Piano: Hamilton Upright
A/V: CD, mini jack
Up to (3) XLR jacks

Basement Studio

Dimensions: 20' x 35'
Floor: Sprung Wood w/ Vinyl covering
Piano: Hamilton Model 243
A/V: CD and Tape Cassette Playback

Labor

The Viterbo University Fine Arts Center Primarily uses a student workforce to fulfill all labor requirements. When necessary, the student labor pool is augmented by local over hire stagehand pool and temp labor.

Management (cont.)

Show Run Positions

Lighting

The primary lighting control position is in the center booth located under the lower balcony overhang. Three DMX runs are located here; one going directly to the dimmer rack and the other two end stage left where tour racks and/or DMX accessories can be connected. One Ethernet port is also located in the room for data distribution to the ETCNet3 network.

Sound

The sound mix position is located House Right in the Lower Balcony.

Rail

The fly rail is located Off Stage Right. Due to building architecture line sets 4-6 are only operable from the Mid Rail position.

Should a production require all available space in the wings Off Stage Right, the entire fly system is operable from the Stage Right Mid Rail.

Follow spot

The follow spot positions are located at both ends of the last row of the Upper Balcony.

Stage Management

Primary calling position located in the center booth on the main floor, just underneath the balcony overhang. Features include paging and "God" microphones, video monitoring of the orchestra pit, and a bathroom. The House appreciates knowing in advance the location preference for the tour.

Management (cont.)

Policies

Front-of-House

Unless otherwise agreed in writing, the house will open one 1/2 hour (30min.) before the scheduled start time for a performance.

Patrons arriving late to a performance will be seated in the house between musical numbers and/or at the discretion of the company stage manager.

Merchandise & Concessions

Merchandise may be sold in the Main Theatre Lobby. Standard house commission rates are 20% if the artist sells, 25% if the house sells.

At most performances wine, beer, mixed drinks and non-alcoholic beverages are available for purchase in the lobby. However, food and drink are **NOT ALLOWED** in the house.

Latex

The use of latex gloves, balloons, and other materials or equipment is prohibited. In the event that latex is a material present in prop(s) or equipment that is of irreplaceable value to the artistic value of the production the use of latex is permitted provided that the prop(s) and/or equipment be quarantined and or disposed of as soon as is feasible.

Viterbo University Smoking and Tobacco Policy

Viterbo University is a smoke and tobacco free campus. Viterbo University helps ensure a healthy campus environment by prohibiting the use, sale, advertisement and distribution of smoking and tobacco products including, but not limited to cigarettes, chewing tobacco, cigars, e-cigarettes, vaping devices, etc. Smoking and tobacco products are prohibited in University facilities, on University grounds, on sidewalks on and adjacent to university property, in university parking lots, at University-sponsored events, and in University vehicles. Policy violations may be reported in writing to Campus Safety, the Fine Arts Center staff, Human Resources, or Residence Life. Persons violating this policy may be subject to disciplinary action.

Pyrotechnics

The use of pyrotechnics including explosives, smoke pots, sparklers, fire crackers, and open flame is not normally permitted in any of the University performance venues. Pyrotechnic devices must be designed, built, fired and otherwise in the control of an individual who is qualified, has appropriate licenses and permits (BATF, 18 U.S.C. Chap. 40) and carries liability insurance of at least \$1,000,000 which names Viterbo University as the beneficiary.

For information on the process for the approval of the use of pyrotechnics, please contact the Fine Arts Center Office.

Carpentry

Seating

Location	Seat Count	Floor	Accessible
Orchestra Pit	31	553	None
Main Floor	522		2 House Right / 1 house left
Lower Balcony	205	585	5 Balcony Left
Upper Balcony	380		None

1138

A seating diagram is included at the end of this document.

Stage Information

Proscenium

Stage Width: 55'-0"
 Stage Height: 30'-0"
 Stage Depth with Orchestra Shell: 34'-6"
 Stage Depth without Orchestra Shell: 32'-6"
 Plaster line to Stage edge: 4'-6"

Wing space

Stage Right Wing space: 10'-10"
 Stage Left Wing space: 37'-0"

Crossover

Through Scene shop which is directly behind rear stage wall.

Stage Height

Stage height: 3'0" (from Row A)

Stage Floor

Material: End Grain Pine Laminate
 Stain: Black
 Dance floors: American Harlequin Cascade, Black, 32'-0" Deep x 60'-0" Wide (approx.)
 Marley Dance Floor, Grey, Tap-able, 25'-7" Deep x 42'-3" Wide

Gridiron

Working height: 63'-0"
 Grid Depth: Plaster line to rear wall
 Grid Width: 70'6"
 Line set Type: Single Purchase
 Number of Line sets: 34
 Maximum Line set Height: varies, see line set Schedule in appendix section.

Orchestra Pit

Orchestra Playing Height:
 Minimum Pit Depth: 11'-0"
 Maximum Pit Depth: 12'-10"
 Minimum Pit Width: Varies
 Maximum Pit Width: 38'-11"
 Approximate area: 400 Sq. Ft.
 Maximum Load: 100lbs. / Sq. Ft.

Carpentry (cont.)

Equipment

Choral Risers

- (12) Wenger Tourmaster 3 Step Choral Risers
- (12) Wenger Tourmaster 4th Step Add-on

Stage Risers

- (16) Wenger Versalite Riser Deck 4'x8' (Black)
- (4) Wenger Versalite Riser Deck 4'x4'

4' x 8' decks require 6 legs
4' x 4' decks require 4 legs

- (24) Riser Legs @ 0'-8"
- (24) Riser Legs @ 1'-0"
- (24) Riser Legs @ 1'-4"
- (48) Riser Legs @ 2'-0"
- (24) Riser Legs @ 2'-8"

Shells

- (6) Wenger Series 61 Rollaway Choral Shell
- (1) Motor Driven Orchestra Shell

Music

- (125) Orchestra Chairs
- (140) Manhasset Type Stands
- (30) Stand Clip Lights (Manhasset Style)
- (15) Stand Clip Lights (adjustable)
- (5) Tympani in the following sizes: 33", 30", 27", 24", 21"
- (1) Xylophone
- (1) 9' Steinway Model D Grand Piano
- (1) Yamaha U-1 Piano

Soft goods

- (1) Main Drape, Split down center, Cranberry @ 55'-0" x 30'-0"
- (1) Full Stage Blackout, Black @ 60'-0" x 30'-0"
- (1) Full Stage Blackout (50% fullness), Black @ 60'-0" x 30'-0"
- (8) Borders, Black @ 60'-0" x 6'-0"
- (1) Teaser, Black @ 60'-0" x 12'-0"
- (16) Leg panels (Flat) Black @ 13'-0" x 30'-0"
- (2) Side Tab panels (SR & SL) Black @ 30'-0" x 24'-0"
- (1) Scrim, Sharks tooth, Black @ 60'-0" x 30'-0"
- (1) Cyclorama, White, Leno-Filled @ 60'-0" x 29'-0"

Rigging

Loading Gallery

The loading Gallery is located on Stage Right and is accessible via spiral staircase. During unloading & loading of the arbors, a minimum of (2) and maximum of (6) persons are allowed at the load rail. **NO EXCEPTIONS.**

All House, Contracted, or Touring personnel will make proper use of all Fall Protection Equipment. **NO EXCEPTIONS.**

Gridiron Capacity

The load capacity is determined in conjunction with the House Technical Director. Please contact as early as possible so that the proper calculations can be made and verified.

Carpentry (cont.)

Hanging Points

(20) 3" Diameter Schedule 40 pipe measuring 4' long are stored on the gridiron for use with motorized chain hoists.

A limited supply of burlap is available to augment touring production inventories.

Line set Schedule

A full line set schedule is available in the appendix. Line sets 4-6 are operable only from the Stage Right Mid rail.

Fire Suppression & First Aid

Fire Curtain

Straight-lift Zetex/fiberglass blend fire/safety curtain. Heat link releases throughout entire system and manual release on either side of proscenium opening. A manually operated winch downstage right resets the curtain to trim.

Water Sprinklers

Sprinklers are located above the Gridiron providing coverage for over the stage.

Fire extinguishers

Onstage: (1) Upstage Right and (1) Downstage Left.

Shop: (1) Next to Loading Dock door and (1) at the opposite entrance.

Access

Crossover

Crossover is upstage of the Cyclorama, through Scene Shop.

Stage Access

Dressing rooms are located down one flight of stairs on Stage Right. Stairs on Stage Left lead to dressing room via Trap Room. Entrance to stage is at Upstage Left and Right.

From Front of House, a platform and two stair units can be set at the center of the stage if pit is at audience level.

Shop area

Located on the other side of the upstage wall, the shop has a full complement of woodworking tools and MIG welder available for minor scenic repairs.

Storage

Empty road and other storage cases can be stored in the shop, trap rooms or empty tour trailers.

Electrics

Power

Building power is 120 VAC / 20amp service.

(2) 400 amp 120/208 VAC company disconnects with 4/Ø cam lock ends are available stage left for lighting & motor power. This is non-isolated, unconditioned power not suitable for audio.

Dimming

The Main Theatre has (5) Strand CD80sv Dimmer racks, each with (96) dimmers. (384) of the dimmers run to stage circuits with the remaining (96) designated for orchestra shell, shop paint light, and house lighting.

Control

House lighting is controlled by a Strand Micro Control panel located in the center booth.

Stage lighting is controlled by an ETC Gio 2K with Ion RPU backup. A Net3 RVI is also available for backstage or tech table.

(2) Additional DMX inputs to the dimmer racks are located Stage Left and Right near the proscenium.

(11) Network inputs for the venue wide ETCNet3 system. The locations are (1) main booth, (1) HL Booth, (1) HR Booth, (1) back wall of main floor, (1) tech table position center of house, (1) Stage Right, (1) Stage Left, (4) Grid SL.

DMX output to intelligent devices/fixture via (10) ETC DMX/RDM Two-Port Gateways. (1) House Left Box Boom, (1) House Right Box Boom, (2) Pro Booms, (2) Box Booms, (1) Up Stage Right, (1) Down Stage Left, (4) Touring Style.

Circuits

All circuiting terminates in 2P&G stage-pin style connectors. Adapters to/from Edison are available in varying quantities as are stage pin extensions.

House circuits are a mixture of fixed and semi moveable. FOH circuits are a mixture of raceway and pigtail with temporary extensions run to the balcony rails as needed. Over stage circuits are soca style tails dropping from the grid in (3) groups on stage left and can be moved to other pipes in groups of (6). Circuits for the 4th electric are pigtail raceway and cannot move.

Electrics (cont.)

Inventory

50	10° Source Four	HPL 750/115X	Electronic Theatre Controls
80	19° Source Four	HPL 750/115X	Electronic Theatre Controls
130	26° Source Four	HPL 750/115X	Electronic Theatre Controls
30	36° Source Four	HPL 750/115X	Electronic Theatre Controls
30	50° Source Four	HPL 750/115X	Electronic Theatre Controls
8	Source Four Jr.	HPL 575/115X	Electronic Theatre Controls
68	Source Four PAR	HPL 750/115X	Electronic Theatre Controls
6	SolaFrame Studio	High End System	Electronic Theatre Controls
20	ColorSource CYC		Electronic Theatre Controls

*On campus academic units take priority for use of venue inventory and from time to time some fixtures will be down for repair. Accordingly inventory levels will vary and may not be available for use.

Follow spots

(2) Robert Juliat – Super Korrigan 1200W/110v HMI follow spots. Primary follow spot position is in the last row of the Upper Balcony. Throw distance is 120'-0" @ 23° to just down stage of mid stage center.

Notes

Due to building architecture, the effective coverage area from the 1st Beam Position is the downstage $\frac{1}{4}$ to $\frac{1}{3}$ of the stage and the effective coverage area for the 2nd Beam Position is the downstage $\frac{2}{3}$ of the stage. Upstage washes are best handled from LX 1.

With the exception of LX 4 which is a raceway type circuit, all other over-stage positions are made with multi-circuit (NOT SOCA TYPE) drop cables that tail down from one of three groupings on the grid Stage Left.

Audio

Power

Building power is 120 VAC / 20amp service.

- (1) Isolated 100amp, 3 phase disconnect with 4/Ø cam lock ends available Stage Left for audio. 5 sections of 2/Ø CAM Feeder. 2 Lex PowerHOUSE Pagoda 100 Amp Portable Distribution Box with 15 duplex receptacles. Power conditioned Edison-style 20 amp circuits located throughout backstage, control booth and house mix positions. Audio power is indicated with orange outlets.

Wiring

Analog: (40) Channel XLR-F AVS Panel with W4 MASS Connector isolated split located Down Stage Left. Digital: Dante Network redundant pair Ethercon located Down Stage Left, Down Stage Right, Up Stage Center, Pit, Lighting Booth, and House Right Lower Balcony.

Control Locations

The primary house mix position is located in the House Right Lower Balcony in what would be seats F7 – F12.

Assistive Listening

The Main Theatre is equipped with a LISTEN radio frequency system with headsets available for patrons. The feed is derived from hanging microphones positioned in front of the mono speaker cluster.

Production Communications

Intercom is a Clear-Com system with a PL Pro MS-232 Base (single channel). Communications are distributed to all production run positions backstage (Stage Right, Left and secondary Rail Positions) and Front-of-House positions (follow spots, sound mix, booth, and secondary follow spot positions).

Communications to the Front-of-House personnel is via 2-way radio.

Audio (cont.)

Monitor/Paging

Video

A house feed of the stage can be sent via an Extron distribution system to the Stage Right & Left run positions, Star Dressing room, scene shop, makeup area, box office & administrative areas. With advance warning the House may also be able to provide an orchestra pit feed to the stage manager position in the booth or backstage run position.

The distribution system is also capable of sending audio/video signal to the Main Theatre Lobby, Box Office Lobby & Recital Hall for overflow seating situations.

Audio

Paging & "God" microphones are available at the front of house mix position, light booth or from backstage depending on the preference of the tour company's stage manager. The House appreciates knowing in advance the location preference for the tour.

A dedicated feed from the house is sent to paging speakers located in the scene shop, main stairwell, dressing room hallway, dressing rooms, costume shop, box office and administrative offices. Each zone is controlled locally via a wall mounted volume dial.

Control room audio is supplied by a feed taken from the front of house mixing console.

NOTE REGARDING AUDIO SYSTEM: The Fine Arts Center is in the process of an extensive audio renovation. The below equipment represents old infrastructure. Once the design and installation process are complete, new equipment and specifications will be added. For base reference, the new audio system will be comprised of a large format stereo line array system built by L-Acoustics. The renovation includes facility wide paging renovations, wiring and signal flow infrastructure, monitor desk and monitor wedges, and additional microphone inventories. This work is expected to be completed in early 2024.

Equipment

Mixing Consoles

Digital: Yamaha CL5

Digital: Yamaha QL5

Digital: Rio3224-D

Digital: Rio1608-D

Fixed Speakers

Mono Cluster

(2) EW MH660 DF

(1) TD812

(4) EAW SB2 50P subwoofers

Delays

(6) EAW JF80

(6) EAW JF60

(6) EAW UB12

Portable Speakers

Front Fill

(4) JF80z

Foldback Speakers

(16) Yamaha DZR12

(2) Yamaha DXS XLF/18

Side Fill

(2) EAW LA325

Audio (cont.)

Amplifiers

- (3) Crest CL9
- (2) Crest CL12
- (1) Crest CL18
- (3) QSC RMX 2450
- (2) QSC RMX 1450
- (1) QSC RMX 5050a

Signal Processors

- (2) DBX Driverack4820

Compressor/Gate

- (2) Presonus ACP-88

Microphones*

- (4) Crown PCC 160
- (2) Crown PZM
- (2) AKG C3000
- (1) AKG C451
- (2) AKG C1000S
- (2) Sennheiser 421 MKII
- (4) Sennheiser e935
- (3) Sennheiser e906
- (4) Sennheiser e904
- (4) Shure Beta 87A
- (1) Shure Unidyne 55SH Series II
- (4) Shure SM58 SW
- (2) Shure SM58
- (4) Shure SM57
- (2) Shure Windyme III 545SD
- (2) Shure Beta 57A
- (3) Shure Beta 58A
- (4) Shure Beta 87A
- (1) Shure Beta52A
- (1) Shure Beta91A
- (4) Countryman M2
- (2) Beyerdynamic TG 155c helix
- (2) Audio-Technica Pro 35 AT8538
- (7) Audio-Technica AT-2021
- (7) Audio-Technica AT-2020
- (4) Audio-Technica AT8533x
- (8) Audix 1255B
- (2) Audix SCX25A
- (8) Avatone CK-1
- (2) Avatone CK-7
- (24) Shure UR1 Wireless Belt pack Transmitter
- (12) Shure UR2/Beta 58a OR Beta 58c Handheld Transmitter

Equalizers

- (3) DBX 1231
- (2) Klark Teknik DN360

Effects

- (1) Lexicon MPX-1
- (1) Lexicon MX400
- (1) Yamaha SPX-2 000
- (1) Yamaha SPX-990

Audio/Video Playback

- (1) Mac Mini w/Qlab 4
- (2) MacBook Pro 13 w/Qlab 4

CD Playback

- (1) American Audio DCD-Pro300MKII

A variety of wireless lavalier microphone elements by Countryman and AKG are maintained in stock.

Stands*

An assortment of tripod and round base microphone stands with accessories.

(22) Tall Tripod

(12) Medium Tripod

(6) Small Tripod

(11) Tall Round Bottom

* The needs of academic units take first priority for audio equipment. From time to time some items such as microphones and related companion items will be down for repair. Accordingly inventory levels will vary and may not be available for use.

Wardrobe

Dressing Rooms

Star Dressing Room

Located offstage right is the Star Dressing room. Amenities include desk, chair, love seat, phone & internet lines, and full bathroom. This room can also serve as a production office for tours as needed.

Principle Dressing Rooms

(4) Principle dressing rooms are located in the basement Dressing rooms A & B measure approximately 9'-0" x 12'-0" and have a capacity of (4) persons each. Dressing rooms C & D measure approximately 9'-0" x 12'-0" and have a capacity of (5) persons each.

Chorus Dressing Rooms

Two Chorus Dressing Rooms, a Men's and a Women's have wall mounted mirrors and (3) lavatories and (3) showers stalls. Available area is approximately 10'-0" x 35'-0" for a capacity of approximately (24) persons.

Makeup

Wall mounted mirrors and countertops running the length of the room. (4) sinks and (2) water fountains are also in the room. Available area is approximately 9'-0" x 64'-0" for a capacity of 24 persons.

Wardrobe

(2) Washers and (3) dryers are available with no charge to touring productions.

Steamer units are available, (1) unit is guaranteed and more may be available based on the needs of academic programs.

One iron and board are available.

"Z-Frame" style wardrobe racks are available, (6) racks are guaranteed though more may be available based on the needs of academic programs.

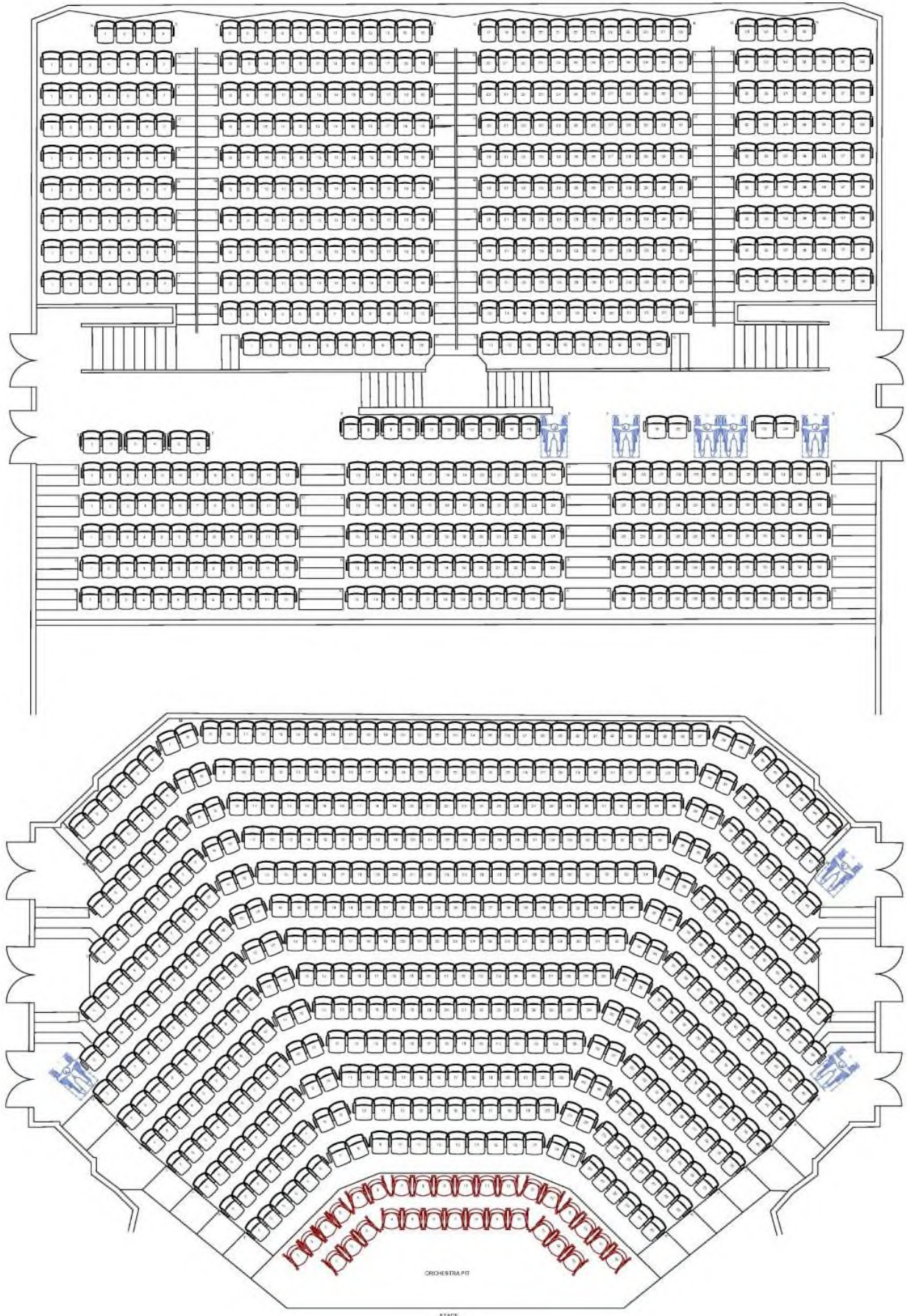
Quick Change

A few options are available for quick change areas. On both sides of the stage a 10'-0" x 10'-0" pop up tent can be set up. If spacing does not allow, alternatives may be available.

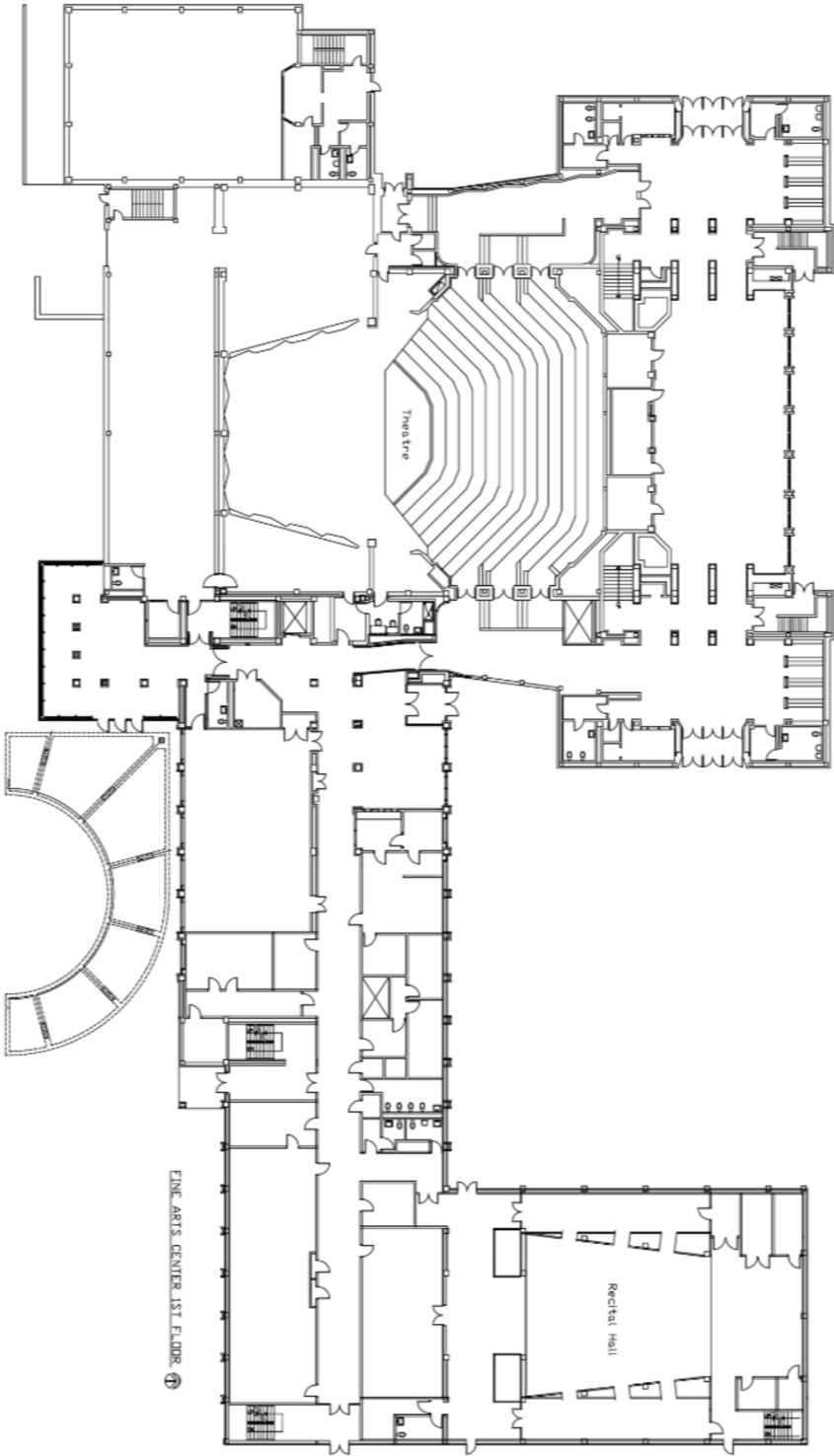


Distance	Line #	Piece	Note: Bricks
	1	Fire Curtain <i>CANNOT MOVE</i>	
	2	House Curtain	12
	3	Teaser (1st Border Flat)	3
8'	4	1st Leg (Black Flat)	4
	5		
	6	#1 Electric	
	7	Screen	3
	8	2nd Border (Black Flat)	3
13'	9	2nd Leg (Black Flat)	3 1/2
	10		
	11		
	12	Hanger 1	
	13	3rd Border (Black Flat)	3
16'	14	3rd Leg (Black Flat)	4
	15	SR Side Tab <i>CANNOT MOVE</i>	2
	16	#2 Electric	
	17	SL Side Tab <i>CANNOT MOVE</i>	2 1/2
	18	Mid-Stage Black Full (pleated, 2 breaks)	16 1/2
21'	19	4th Leg (Black Flat)	3 1/2
	20		
	21		
	22		
	23	5th Border (Black Flat)	2
25.5'	24	5th Leg (Black Flat)	3 1/2
	25		
	26	3rd Electric	
	26a		
	27	6th Border (Black Flat)	2
29'	28	6th Leg (Black Flat)	4
31'	29	Scrim- Black	?
	30		
	31	#4 Electric- Cyc lights	
	32		
35'	33	Full Stage Black Flat	8
35.4'	34	Cyc- White	4

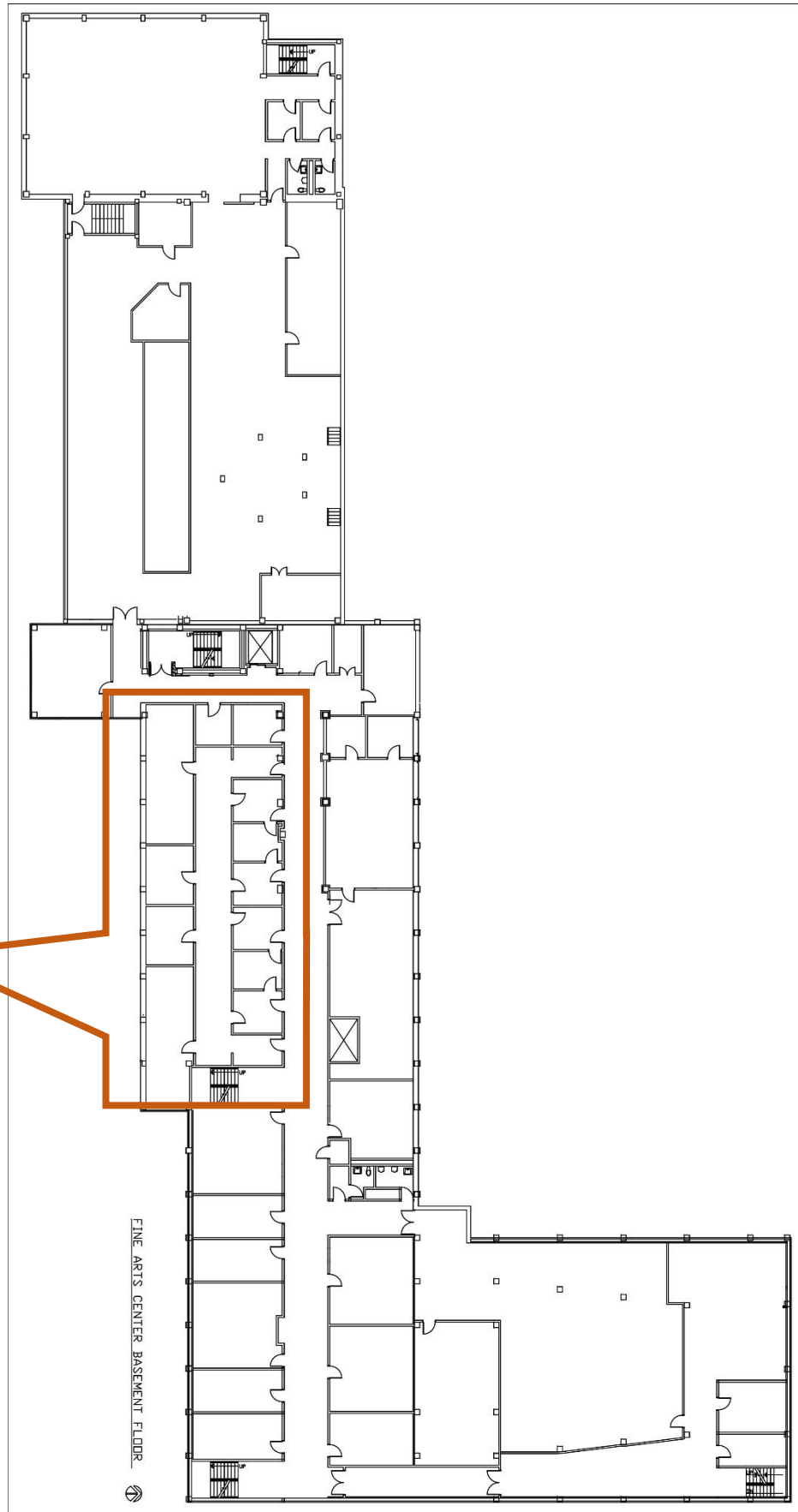
Main Theatre Seating Diagram (1138 seats) Pit: 31, Main Floor:522, Lower Balcony: 205, Upper Balcony:380



First Floor Plan

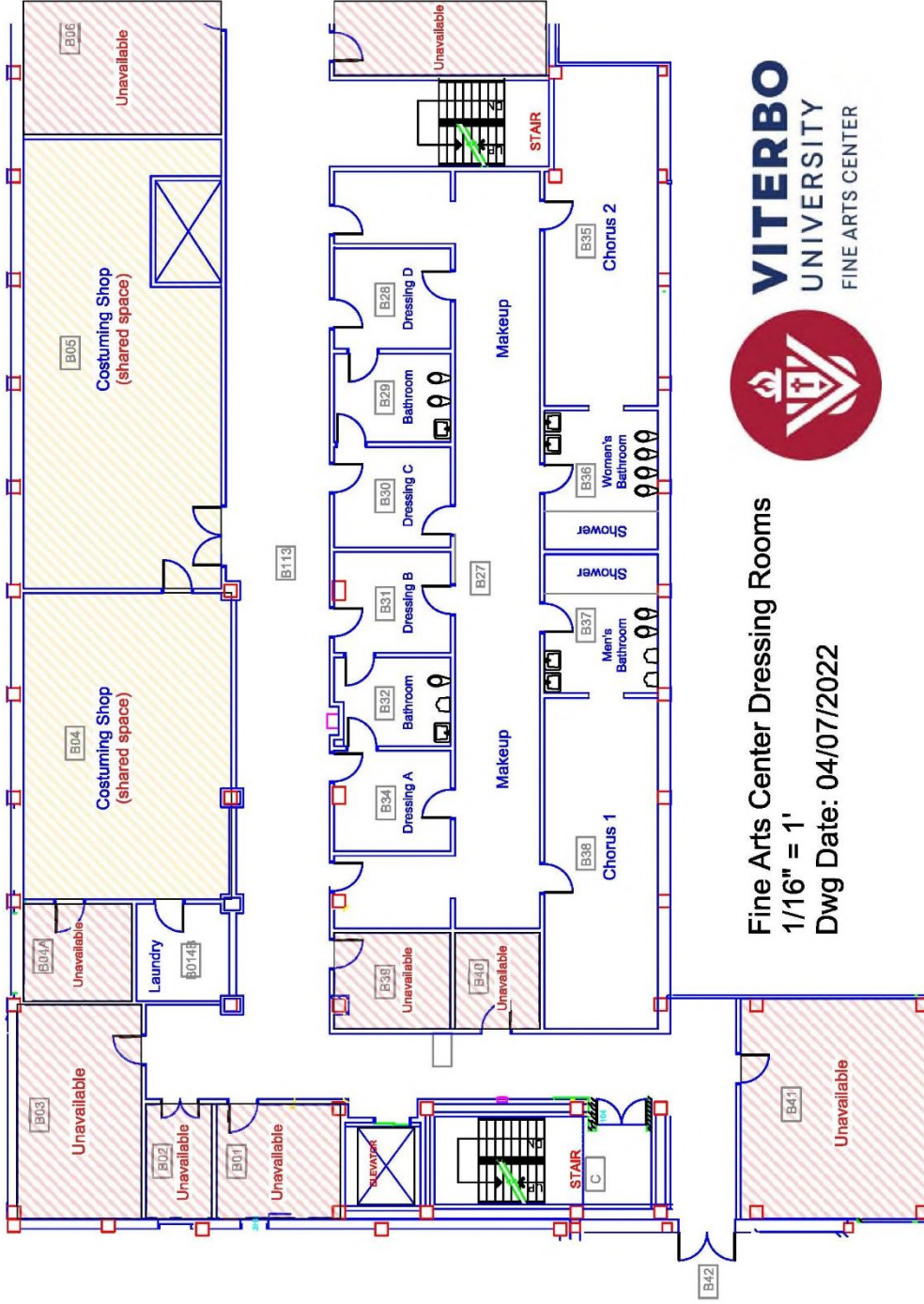


Basement Plan



Dressing Rooms

FINE ARTS CENTER BASEMENT FLOOR



Fine Arts Center Dressing Rooms
 1/16" = 1'
 Dwg Date: 04/07/2022

